

FLAT STEEL BATS @ 4" O.C.  
NO PERPENDICULAR SUPPORT BARS  
ALLOWED FOR STRUCTURES LESS THAN  
84" DIA.

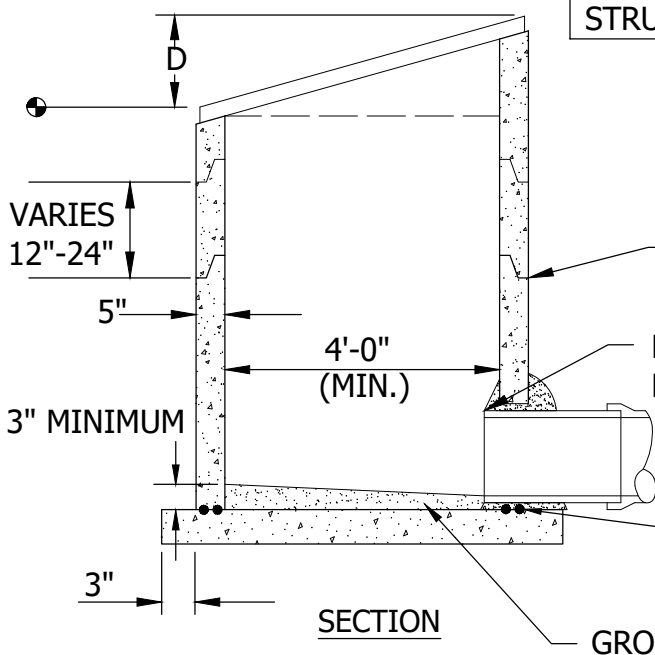
HOT-DIPPED GALVANIZED GRATE IN 2  
SECTIONS WITH HEAVY DUTY HINGES  
ABLE TO SUPPORT 250 LBS/SF AND BE  
ABLE TO REMOVE ONE SECTION FOR  
ACCESS TO STEPS BY REMOVING NUTS  
FROM TWO ANCHOR BOLTS. SUBMIT  
SHOP DRAWINGS TO ENGINEER FOR  
REVIEW PRIOR TO FABRICATION.

MANHOLE STEPS SHALL BE PLACED SO THAT  
LOCATION IS PERPENDICULAR TO THE BARS.  
MANHOLE STEPS, NEENAH R1981J OR EQUAL,  
16" ON CENTER. ALUMINUM STEPS APPROVED.

GRATE DETAIL

<u>DIAMETER</u>	<u>TOP OF STRUCTURE SLOPE (D)</u>
48" DIA.	9" OR 18"
>48" DIA.	12" OR 24"

SEE STORM SEWER SCHEDULE FOR SPECIFIC  
STRUCTURE.



NO BLOCK STRUCTURES ARE ALLOWED.

ALL JOINTS IN MANHOLE TO  
HAVE RUBBER GASKETS.

PIPE SHALL BE CUT TO BE 2"-4" INSIDE  
MANHOLE WALL.

DOGHOUSES MUST BE MORTARED  
BOTH INSIDE AND OUTSIDE.

PLACE 2 BEADS OF RAMNEK OR  
EQUAL, BETWEEN BOTTOM  
SLAB AND BARREL SECTION.

GROUTED INVERT



STANDARD DETAILS  
STANDARD OVERFLOW STRUCTURE  
**COTTAGE GROVE, MINNESOTA**

JANUARY 2022

PLATE NO.  
**STO-18**