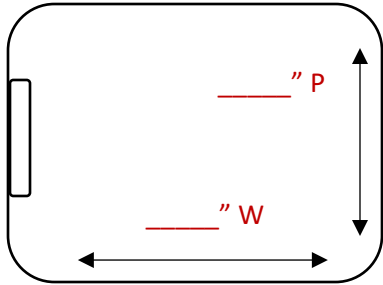




EGRESS WINDOW HANDOUT

EXISTING WINDOW OPENING: Y / N - SIZE: _____" W x _____" H

EXTERIOR WINDOW WELL & LADDER



HEADER: _____

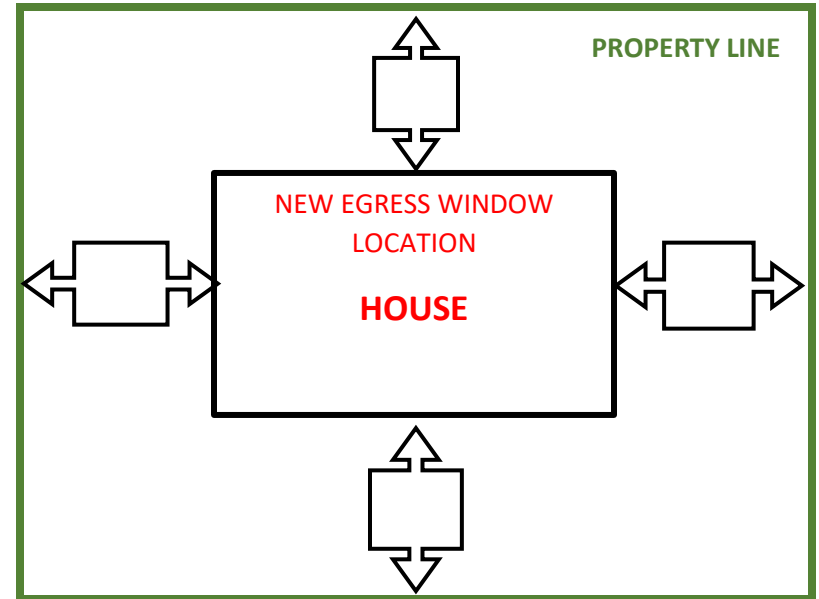
_____ " W

_____ " H

FOUNDATION TYPE:

**FLOOR TO SILL HIGHT:
(MAX 44")**

MARK THE FOLLOWING:
Location of Window, Streetside, Front of House, Setback



NOTES/DETAILS:

HOMEOWNER: _____

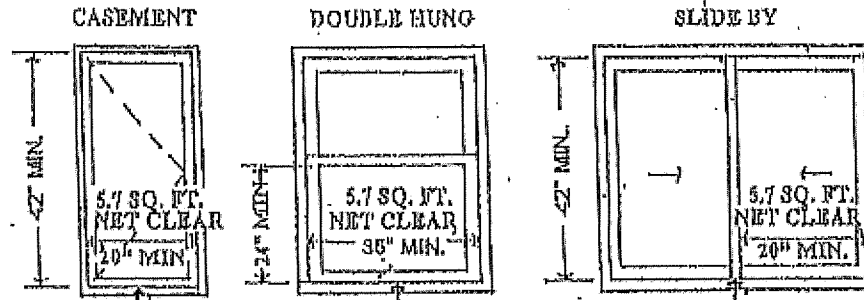
ADDRESS: _____

EGRESS WINDOWS

① WINDOW ELEVATIONS

NOTE: NET CLEAR OPENING OF WINDOW SHALL EQUAL 5.7 SF OR BETTER
 (Calculate Height x width inches + 144 to determine opening size)

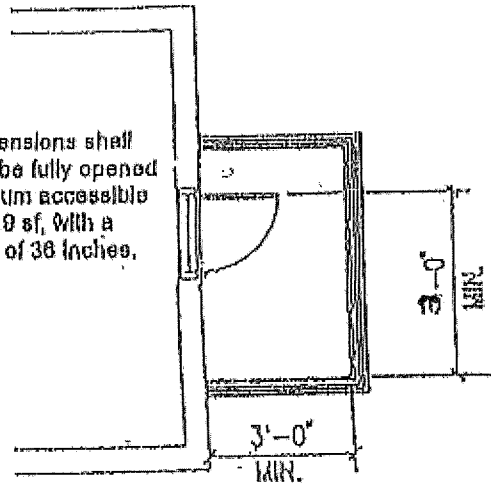
TYPICAL EXAMPLES:



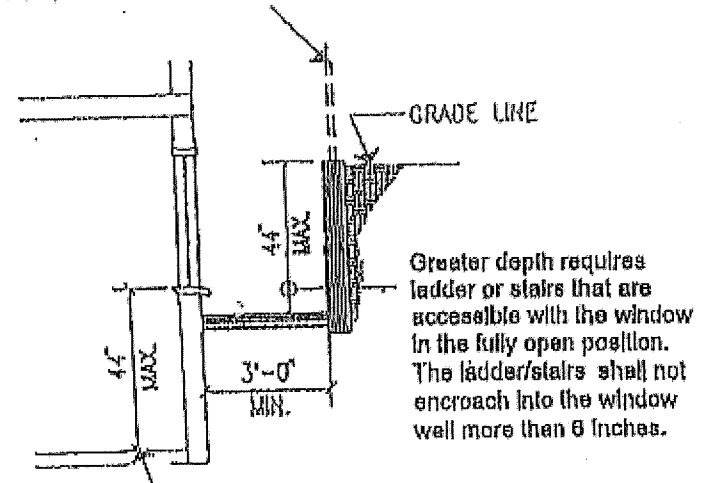
② WINDOW WELLS – BASEMENT EGRESS WINDOWS

NOTE: Escape and rescue windows with a finished sill height below the adjacent ground elevation shall have a window well.

Clear horizontal dimensions shall allow the window to be fully opened and provide a minimum accessible net clear opening of 5.7 sf, with a minimum dimension of 36 inches.



"GUARDRAIL-TYPE" RAILING REQUIRED IF NEAR PROPERTY LINE OR WALKWAY



min. width

bt-5 • Bedroom Window Egress: Min. height and width requirements (in inches)

| | | | | | | | | | | | | | | | | | | | | | | | | | | | | | |
|--------|----|-----|-----|-----|-----|-----|-----|-----|-----|-----|----|-----|-----|-----|-----|-----|-----|-----|-----|-----|-----|-----|-----|-----|-----|-----|----|-----|----|
| width | 20 | 20½ | 21 | 21½ | 22 | 22½ | 23 | 23½ | 24 | 24½ | 25 | 25½ | 26 | 26½ | 27 | 27½ | 28 | 28½ | 29 | 29½ | 30 | 30½ | 31 | 31½ | 32 | 32½ | 33 | 33½ | 34 |
| height | 41 | 40 | 39¼ | 38¾ | 37½ | 36½ | 35¾ | 35 | 34¾ | 33½ | 33 | 32¾ | 31¾ | 31 | 30½ | 30 | 29½ | 29 | 28½ | 28 | 27½ | 27 | 26½ | 26¼ | 25¾ | 25½ | 25 | 24½ | 24 |

min. height